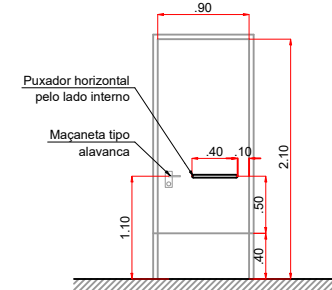
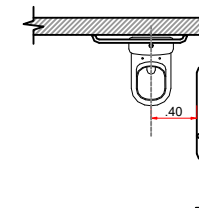
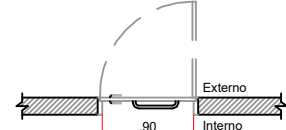


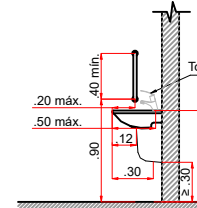
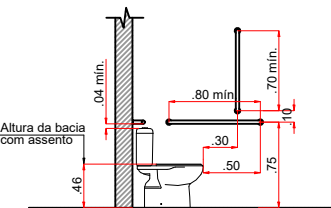
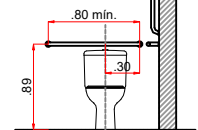
CORTE ESQUEMÁTICO A - A
Escala 1:50



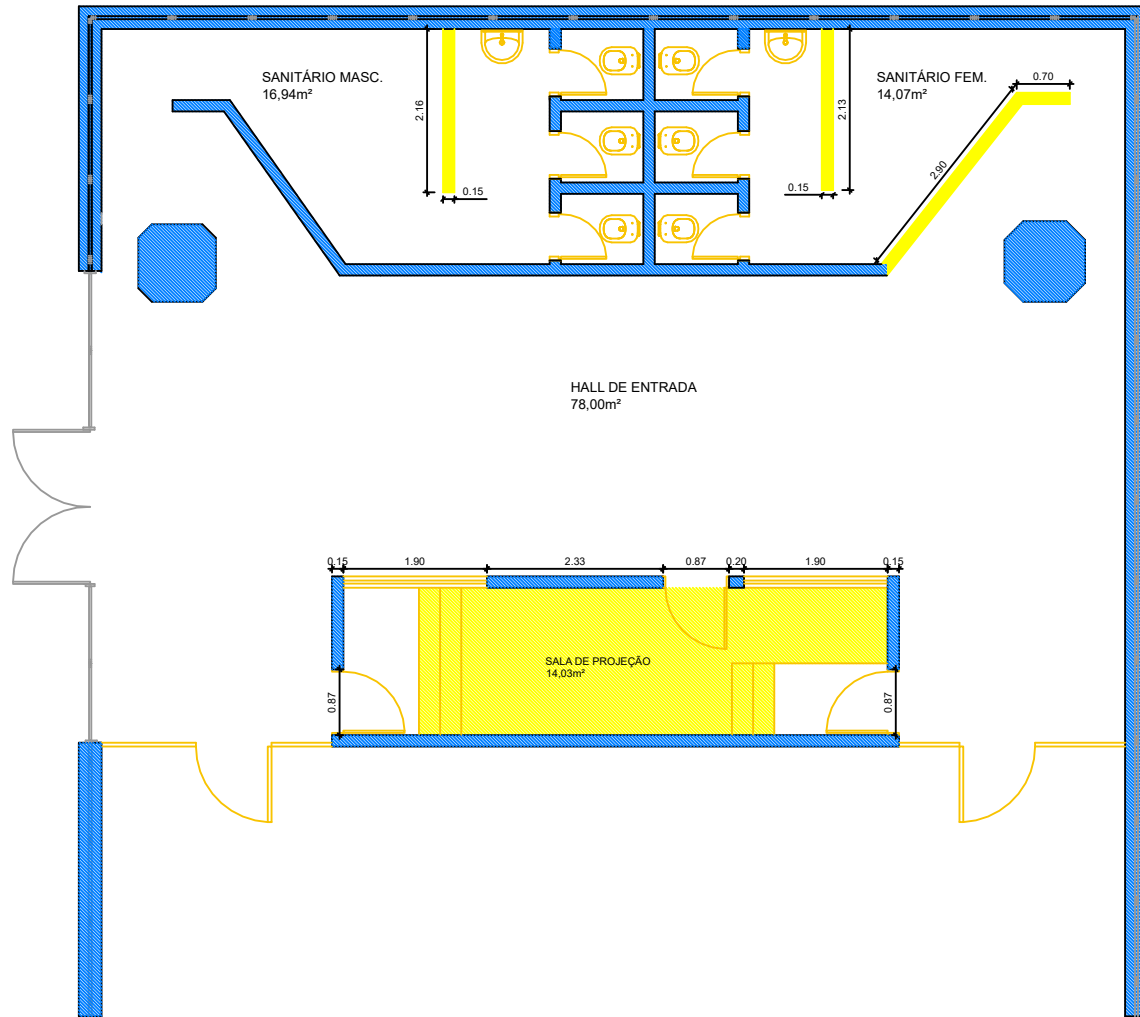
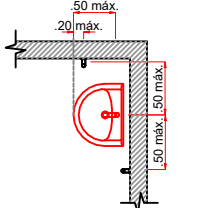
DETALHE 01 - PORTA SANIT. PNE
Sem escala



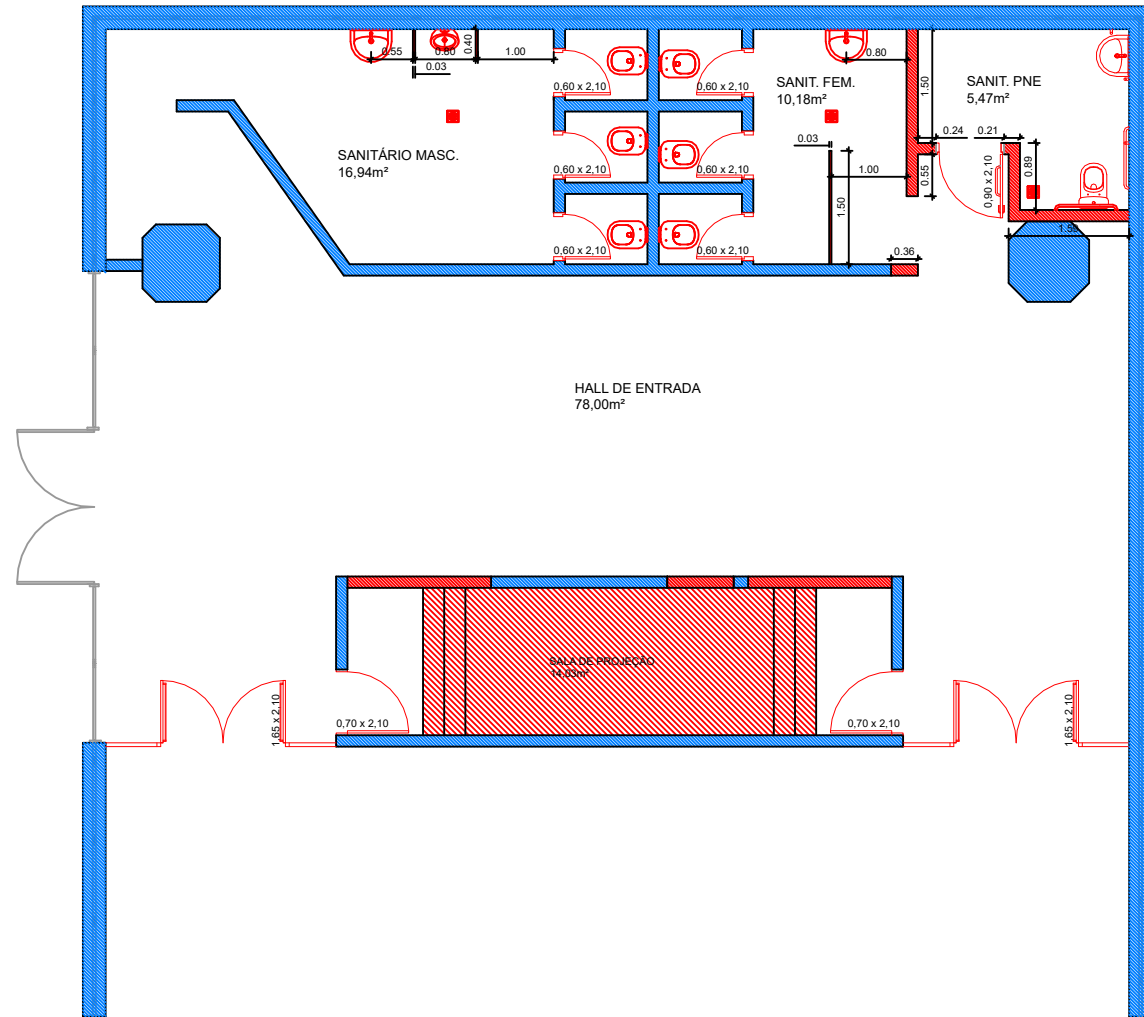
DETALHE 02 - VASO PNE
Sem escala



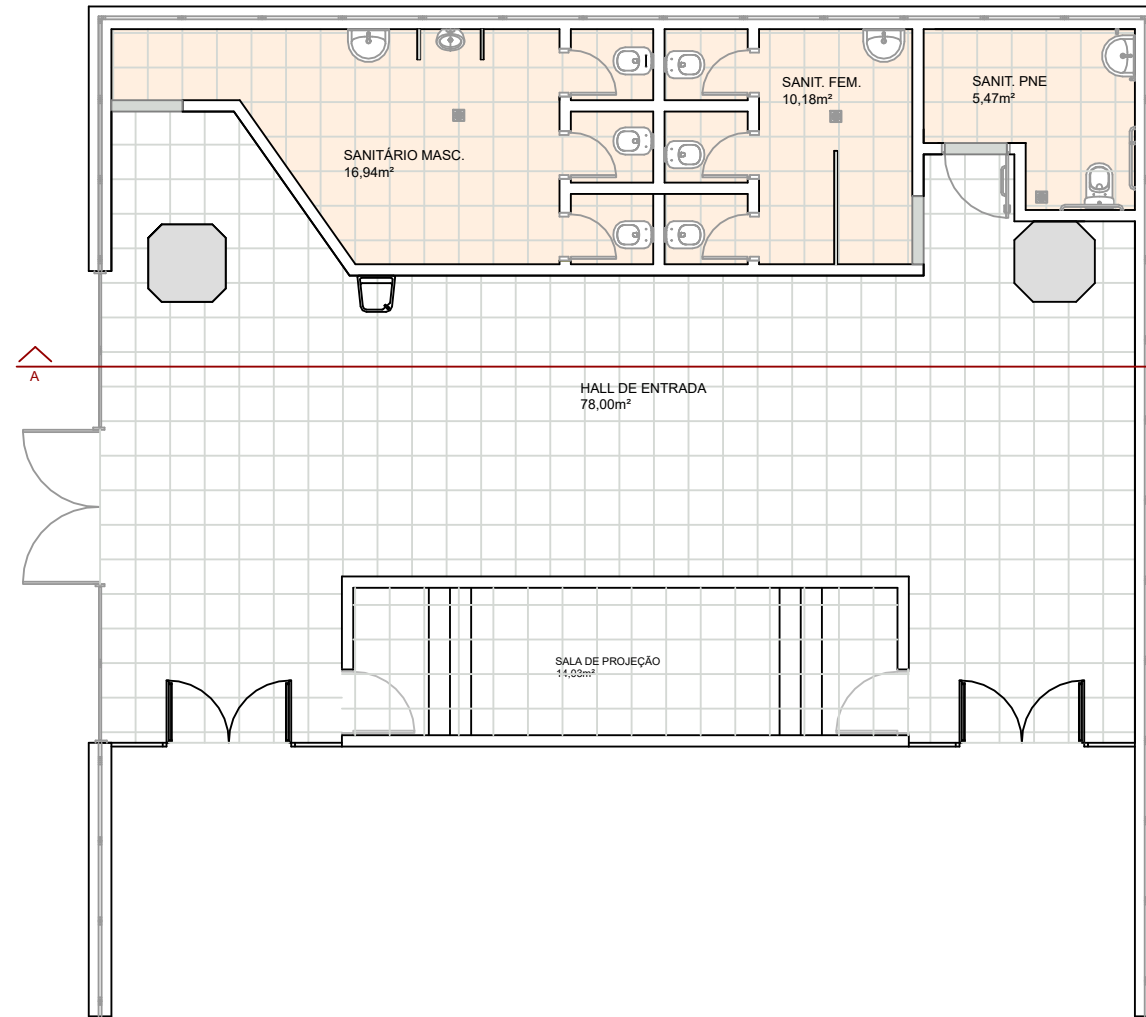
DETALHE 03 - LAVATÓRIO PNE
Sem escala



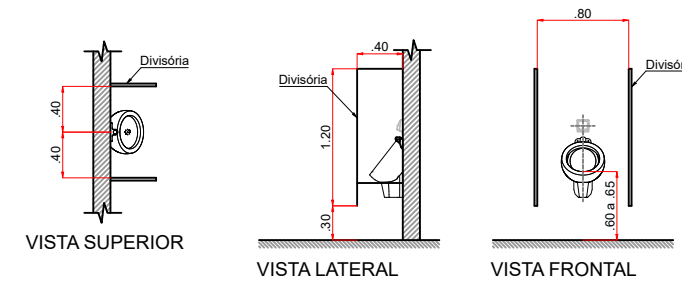
PLANTA BAIXA - DEMOLIR
Escala 1:100



PLANTA BAIXA - CONSTRUIR
Escala 1:100



PLANTA BAIXA - ARQUITETÔNICO
Escala 1:100



DETALHE 04 - MICTÓRIO
Sem escala



PREFEITURA DO MUNICÍPIO DE JAHU
SECRETARIA DE HABITAÇÃO E PLANEJAMENTO URBANÍSTICO

Obra: REFORMA E ADEQUAÇÃO DOS SANITÁRIOS E HALL DE ENTRADA
DO CINE MUNICIPAL "CLODOMIRO CELULARE", EM JAHU/SP

Local: RUA PAISSANDU, Nº 444 - CENTRO - JAHU/SP

ANA PAULA MÓDOLO SANTOS
ENGENHEIRO CIVIL I

Arquivo	Rev.	Escala	estudo	Fl.
SANITÁRIOS CINEMA.dwg	0	INDICADAS	08/2025 impressão 08/2025	01/01